

GAS VALVE RETROFIT KIT

Pull Through Tube Heater Models: RSTP15C, RSTP17C

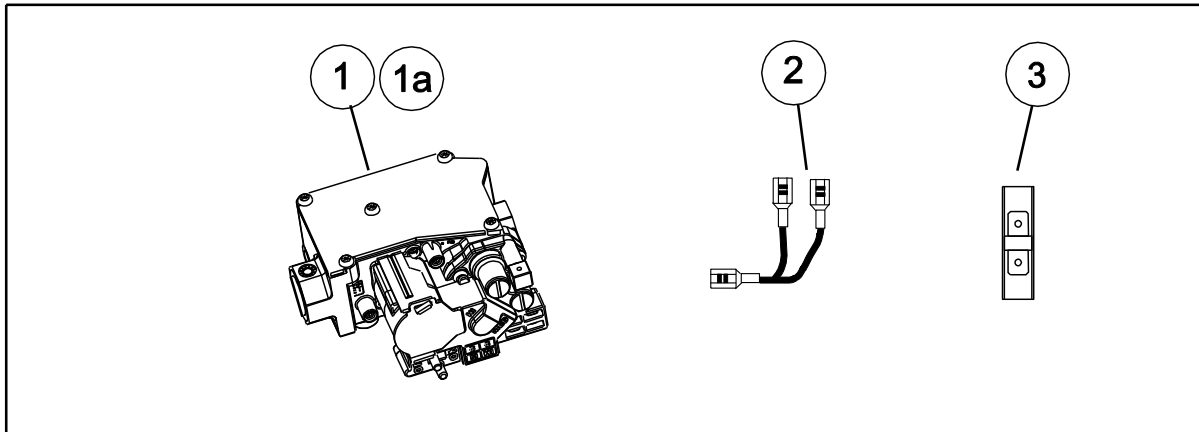
DESCRIPTION:

This kit is designed to replace existing Honeywell gas valve #VR8205 with White-Rodgers gas valve #36J22 on pull through tube heater models RSTP15C and RSTP17C.

⚠ CAUTION

This conversion kit is to be installed by an authorized distributor or other qualified agency in accordance with the manufacturer's instructions and all codes and requirements of the authority having jurisdiction. Failure to follow instructions could result in serious injury, property damage or death. The qualified agency performing this work assumes responsibility for this conversion. **TURN OFF ALL ELECTRICAL AND GAS SUPPLIES TO THE CONTROL BEFORE MAKING THIS CONVERSION.**

PACKAGE CONTENTS:



COMPLETE KIT NUMBERS - GAS VALVE REPLACEMENTS

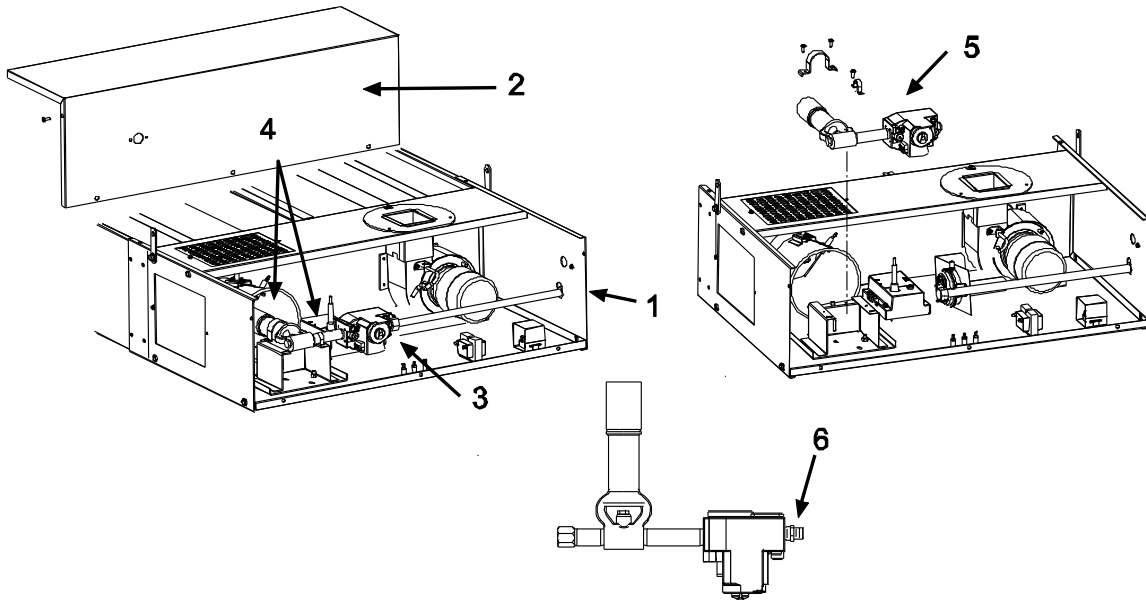
44010530 - KIT, GAS VALVE - NAT

44010540 - KIT, GAS VALVE - LP

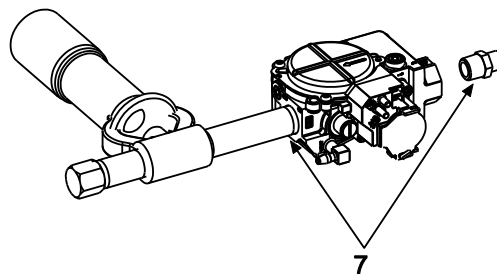
Item No.	Part No.	Description
1	30755020	Gas Valve - White-Rodgers #36J22-231 - Nat Gas
1a	30755040	Gas Valve - White-Rodgers #36J22-232 - LP Gas
2	43444050	Lead Wire Assembly - 3"
3	30516010	Receptacle - Double Male
4	44011290	Form, Gas Valve Retrofit

REPLACING THE GAS VALVE

1. Disconnect electrical supply and gas connection from control box.
2. Remove the access panel and disconnect the wires from gas valve.
3. Disconnect the nut and sleeve from the gas valve compression fitting.
4. Remove screws, large burner clamp and small manifold clamps from the manifold support.
5. Lift complete burner and gas valve assembly from the heater.
6. Remove the existing gas valve from the burner manifold using pipe wrenches. Remove the compression fitting from the gas valve using a wrench. **DO NOT DISCARD**. This will be used to connect the new replacement gas valve to the manifold tubing.



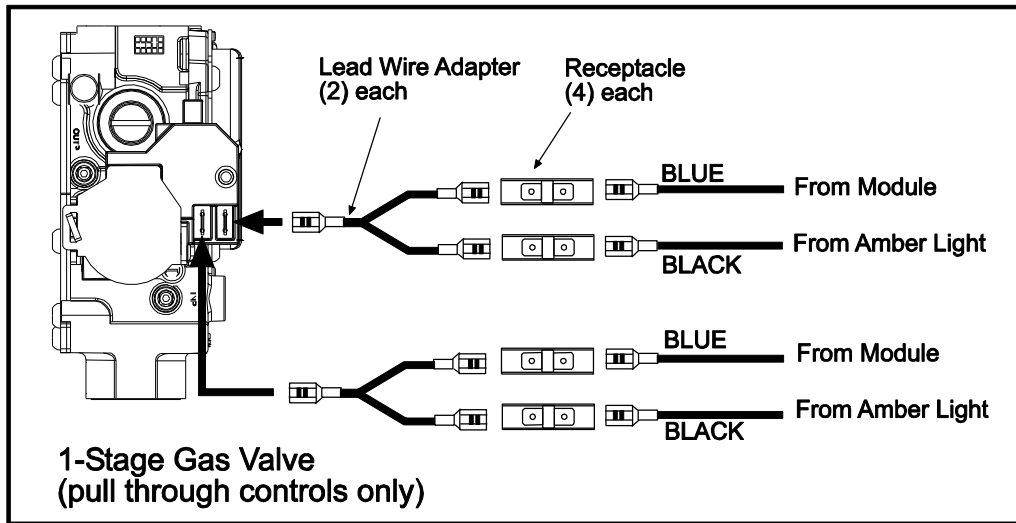
7. Apply a small amount of pipe thread sealant to the pipe nipple threads and to the pipe threads of the compression fitting. Re-attach the new gas valve to the burner manifold assembly. Re-thread the compression fitting into the new gas valve. Tighten to a snug fit using a wrench. **DO NOT OVERTIGHTEN**.



8. Re-assemble the complete burner and gas valve assembly into the control box in reverse order from above. Re-connect wires to gas valve. See below for connections.

Note: Single stage models are furnished with (2) lead wire adapters and (4) receptacles. These are for connection of the wires from the module (valve) terminals and the amber light. See below for connections.

GAS VALVE WIRING CONNECTIONS - (1 STAGE)



OUTLET GAS PRESSURE CHECK AND ADJUSTMENTS

Gauges that measure pressure in pounds per square inch are not accurate enough to measure or set the manifold pressure. All measurements **MUST BE** made when the heater and all other gas burning equipment that is connected to the gas supply system are operating at maximum capacity. The combination gas valve is factory set and should not need adjustment. If gas pressure adjustment is required, follow the instructions.

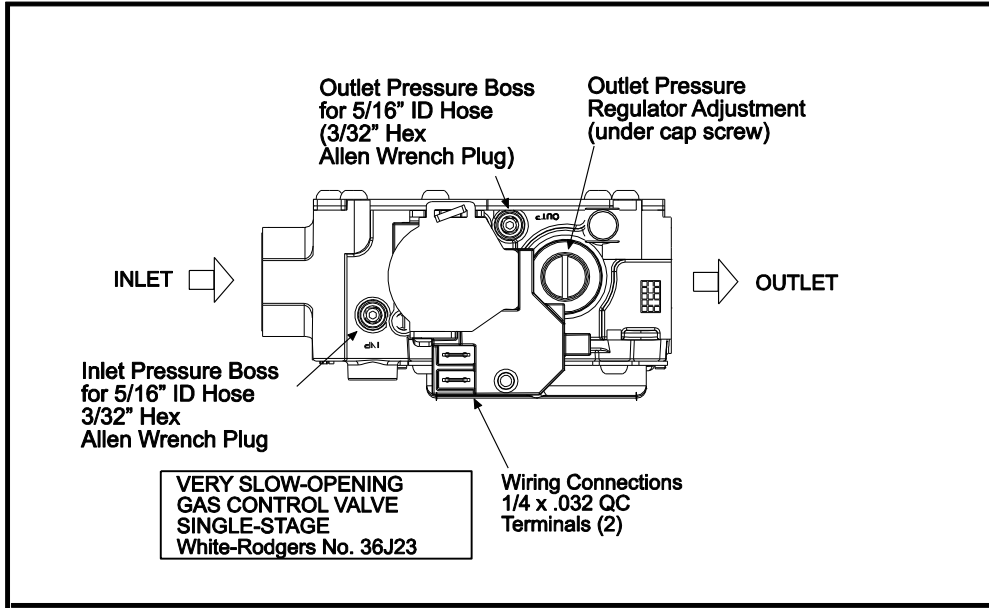
1. Turn off all electrical power to the system prior to connecting manometer hoses.
2. Turn the outlet pressure boss test screw (3/32" Hex allen wrench plug) in the center of the boss **not more than one turn counterclockwise**. Attach a 5/16" hose and manometer over the tapered outlet pressure boss on the valve (see figure below). If regulator needs to be adjusted, see instructions below.

To Adjust Regulator (1-stage gas valves):

1. Turn on power and energize the main gas valve. Remove regulator cover screw (see figure below). Turn regulator adjustment screw **clockwise** \curvearrowright to **increase pressure**, or **counterclockwise** \curvearrowleft to decrease pressure. Replace regulator cover screw and tighten securely.

DO NOT EXCEED THE PRESSURES SHOWN IN THE GAS PRESSURE TABLE.

2. After testing pressure and adjusting the regulator, turn off all electrical power to the system, remove manometer hoses, turn outlet test screw (3/32" Hex) clockwise to seal pressure port. Tighten to 7 in-lb minimum. Turn on system power.



GAS PRESSURE TABLE			
GAS TYPE	MANIFOLD PRESSURE	SUPPLY PRESSURE	
		<i>Minimum*</i>	<i>Maximum</i>
Natural Gas	3.5" W.C.	5" W.C.	14" W.C.
Propane Gas	10.0" W.C.	11" W.C.	14" W.C.

*Minimum permissible gas supply pressure for purpose of input adjustment.

GAS LEAK TEST

Perform the gas leak test using a leak detection solution or soapsuds solution at the orifices, pipe nipples and pressure boss screws or check by one of the methods listed in Appendix D of the National Fuel Gas Code, ANSI 2223.1-(latest edition). Bubbles forming indicate a gas leak. **SHUT OFF GAS AND FIX ALL LEAKS IMMEDIATELY.**

⚠ WARNING

**DO NOT OMIT THE GAS LEAK TEST.
DO NOT USE AN OPEN FLAME OF
ANY KIND TO TEST FOR LEAKS!**

SPACE-RAY

Post Office Box 36485 (28236) • 305 Doggett Street (28203) • Charlotte, North Carolina
Phone (704) 372-6391 • Fax (704) 332-5843 • www.spaceray.com • email: info@spaceray.com